

Prerequisites

In order to use the *eduroam* network at Lublin University of Technology it is necessary to:

1. have an **active** e-mail address in the *pollub.edu.pl* domain which usually has the form of: firstname.lastname@pollub.edu.pl or tNNNNN@pollub.edu.pl, where t – is the type of program and NNNNN is the student's book number (you can check the address assigned to you at: <http://sprawdz.pollub.pl>);
2. get an individual password for the *eduroam* network (for a detailed description see the *Registration* section at <http://eduroam.pollub.pl>). **The random password generated automatically can be changed using the *Change Password* function available at <http://eduroam.pollub.pl>;**
3. download the *CA certificate* in the *der* format (http://eduroam.pollub.pl/cert/plca_cert.der);

OR

1. have an **active** guest account, which usually has the form of: gosc.number.firstname.lastname@pollub.pl (you can obtain a guest account from the IT Center of LUT, or from your faculty's network administrator);
2. download the *CA certificate* in the *der* format (http://eduroam.pollub.pl/cert/plca_cert.der).

Quick connection setup

Below a quick connection setup method is presented. This method does not include CA certificate installation which allows for securing the communication with the authentication server. CA certificate installation is not required however it is **strongly recommended**.

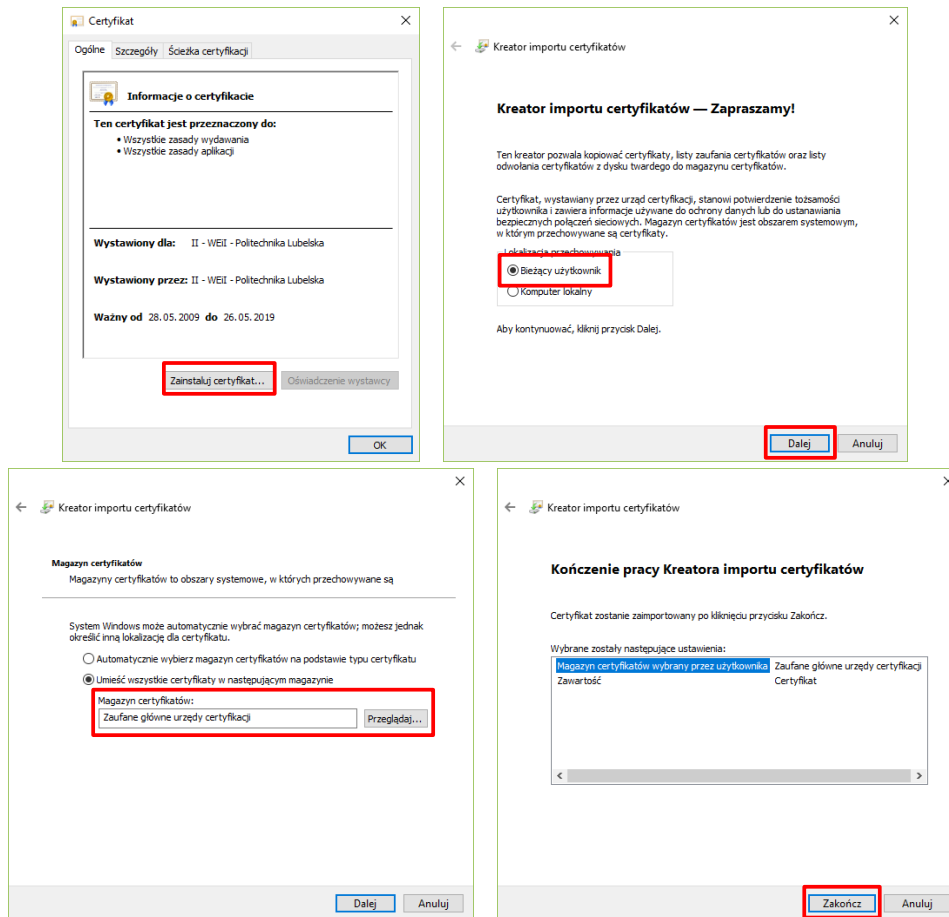


In order to setup the connection: (1) click the Wi-Fi icon, (2) select *eduroam* from the list of available networks and click *Connect*, (3) enter your e-mail address **in pollub.edu.pl domain (or enter your guest login)** and your password for the *eduroam* network. Computer should

automatically connect to the *eduroam* network. It may be necessary to accept authentication server's certificate. Once you have verified the server's fingerprint accept the certificate.

Importing the CA certificate

Open the file containing the CA certificate in *der* format which is recognized by Windows (*plca_cert.der*).

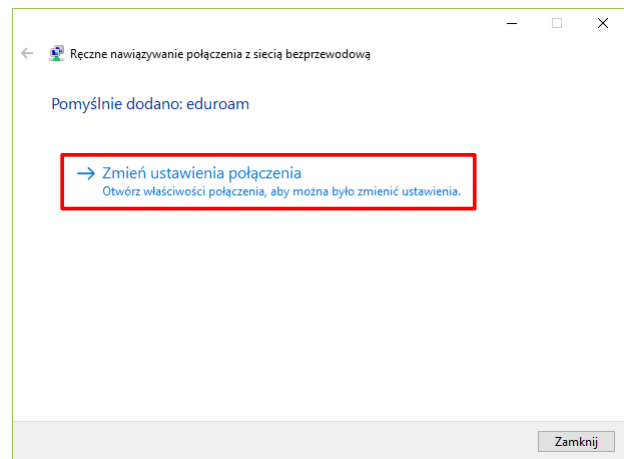
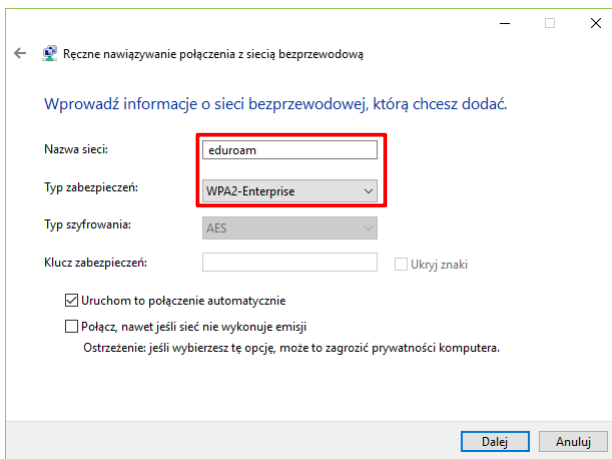
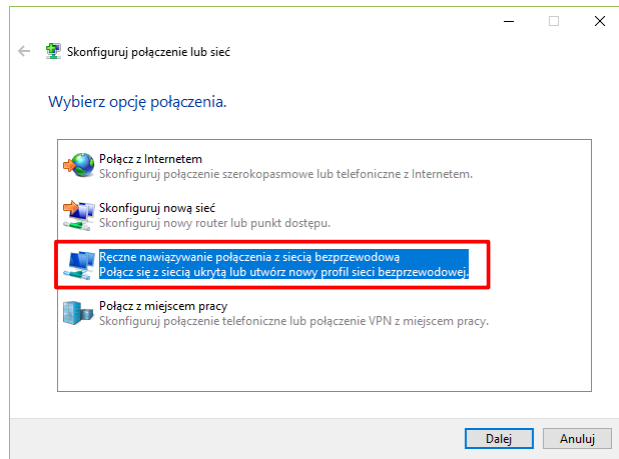
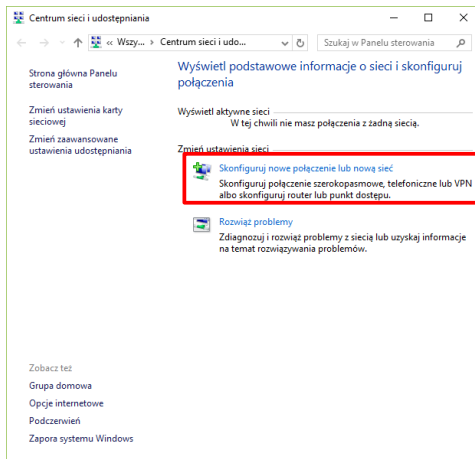


A window with certificate properties will open. Next: (1) select *certificate installation*, (2) select installation for the *current user*, (3) select saving the certificate in Trusted Root Certification Authorities, (4) finish certificate import wizard and close certificate properties window

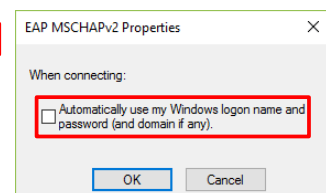
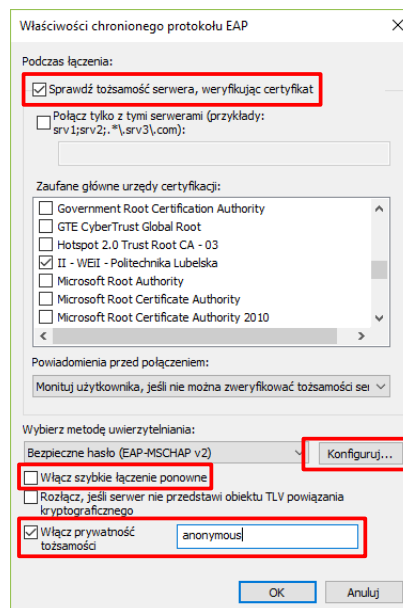
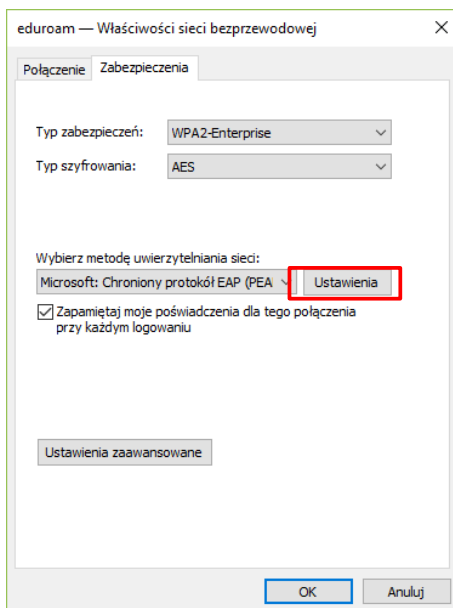
Connection setup



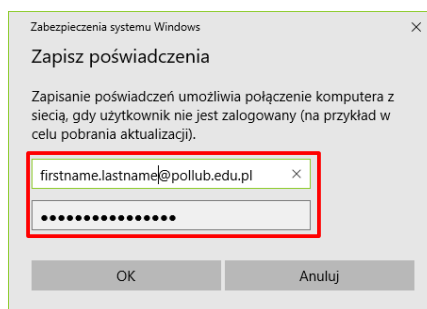
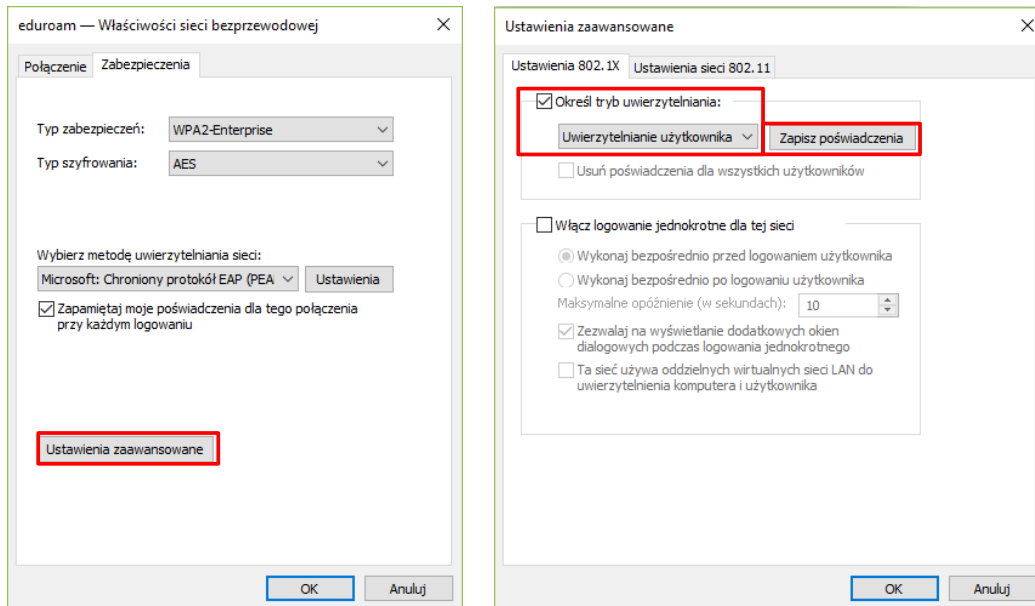
In order to setup the connection right-click the Wi-Fi icon and open *Network and sharing center*.



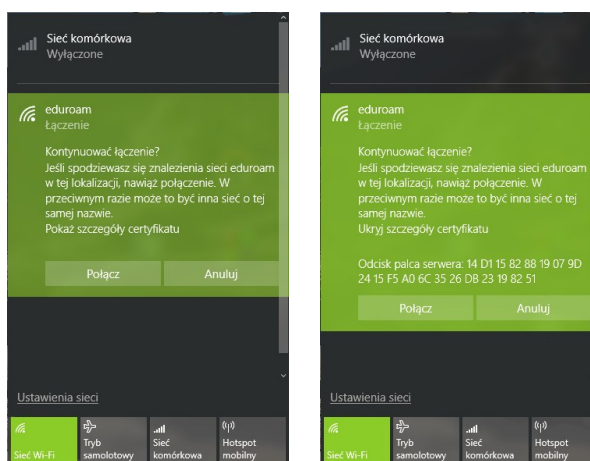
Next: (1) select *Configure new connection or network*, (2) select *Manually connect to wireless network*, (3) enter the *eduroam* network name and set *security type* to *WPA2-Enterprise*, (4) click *Change connection settings manually*.



In the connection settings (1) open settings of the PEAP authentication method, (2) enable *checking of the server's identity*, (3) disable *quick reconnect*, (4) enable *anonymous identity* and enter *anonymous* in the text field, (5) in configuration of EAP-MSCHAPv2 disable *automatic using of windows logon credentials*



Once back to wireless connections settings: (1) open *advanced settings*, (2) set authentication mode to *User authentication* and then click *Save credentials*, (4) enter your e-mail address **in pollub.edu.pl domain (or your guest login)** and your password for the *eduroam* network, (5) accept all entered settings.



Computer should automatically connect to the *eduroam* network. It may be necessary to accept authentication server's certificate. Once you have verified the server's fingerprint accept the certificate.